

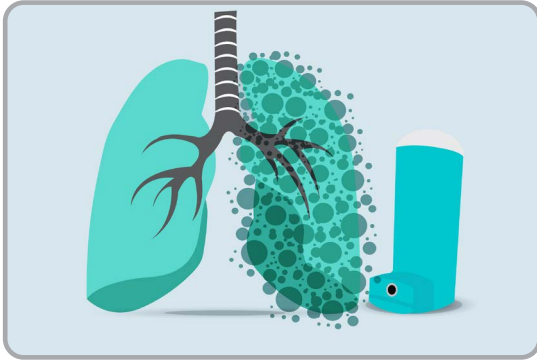


EQUIPP

Powered by PQS

Medication Management in Persons with Asthma Measure

Displayed as:
Medication Management: Asthma



Description

- This measure was developed by the National Committee for Quality Assurance ([NCQA](#)) which monitors the percentage of patients diagnosed with persistent asthma and remained on an asthma controller medication for 75% of the measurement period
- Persistent asthma is determined by:
 - o Pharmacy claims data – at least four asthma medication fills
 - o Medical claims data
 - any asthma-related ED visits
 - any acute inpatient encounter
 - multiple outpatient encounters (must include two asthma medication fills)
- The eligible member population includes:
 - o Medicaid: Ages 5-64
 - o Medicare: Ages 18-85
- Measurement rate reported as:
 - o Percentage of eligible patients who achieved a Proportion of Days Covered (PDC) of 75% or more of their asthma controller medication



Calculation

NUMERATOR

Patients with 75% or more days covered with asthma controller medication(s)

DENOMINATOR

Eligible population of patients with persistent asthma

Exclusions

- Patients with a diagnosis of emphysema, COPD, chronic bronchitis, cystic fibrosis, acute respiratory failure, other chronic respiratory conditions
- Patients with no asthma controller medications dispensed during the measurement period

Asthma Controller Medication Classes

Antiasthmatic combinations

Antibody inhibitor

Inhaled steroid combinations

Inhaled corticosteroids

Leukotriene modifiers

Mast cell stabilizers

Methylxanthines



PQS