



# Talk A1c to Me

## Comprehensive Diabetes Care Measures

The Comprehensive Diabetes Care measures, developed by the National Committee for Quality Assurance (NCQA), assess key components of diabetes care.

The three rates calculated by PQS pertain to A1c testing and retinal examination.

- % of patients with hemoglobin A1c (HbA1c) testing
- % of patients with poorly controlled HbA1c (>9%)
- % of patients receiving a retinal exam

The eligible population included in the measure must meet the following criteria:

- Be 18–75 years old
- Have a diagnosis of diabetes mellitus
- Meet the definition of continuous enrollment

Specific patient populations are excluded, such as those with dementia or select advanced illnesses.

### 2018 HbA1c Testing Rates<sup>1</sup>

**94.4%**



Medicare  
HMO

**91.3%**

Commercial  
HMO

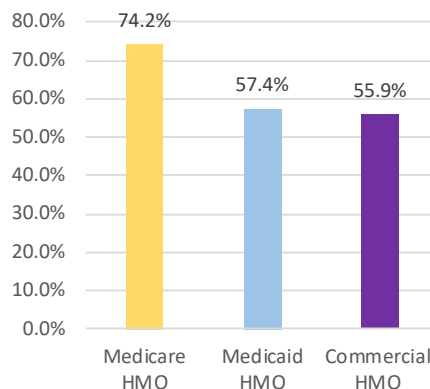


**87.8%**



Medicaid  
HMO

### 2018 Rates for Retinopathy Exams<sup>1</sup>



**1 in 5**  
patients have poorly  
controlled A1c<sup>1,2</sup>

1. National Committee for Quality Assurance (NCQA). <https://www.ncqa.org/hedis/measures/comprehensive-diabetes-care/>. Accessed 9/3/2020.

2. Poor control (HbA1c > 9%) for Medicare HMO and PPO plans based on reported rates for that year.

## Why choose pharmacy?

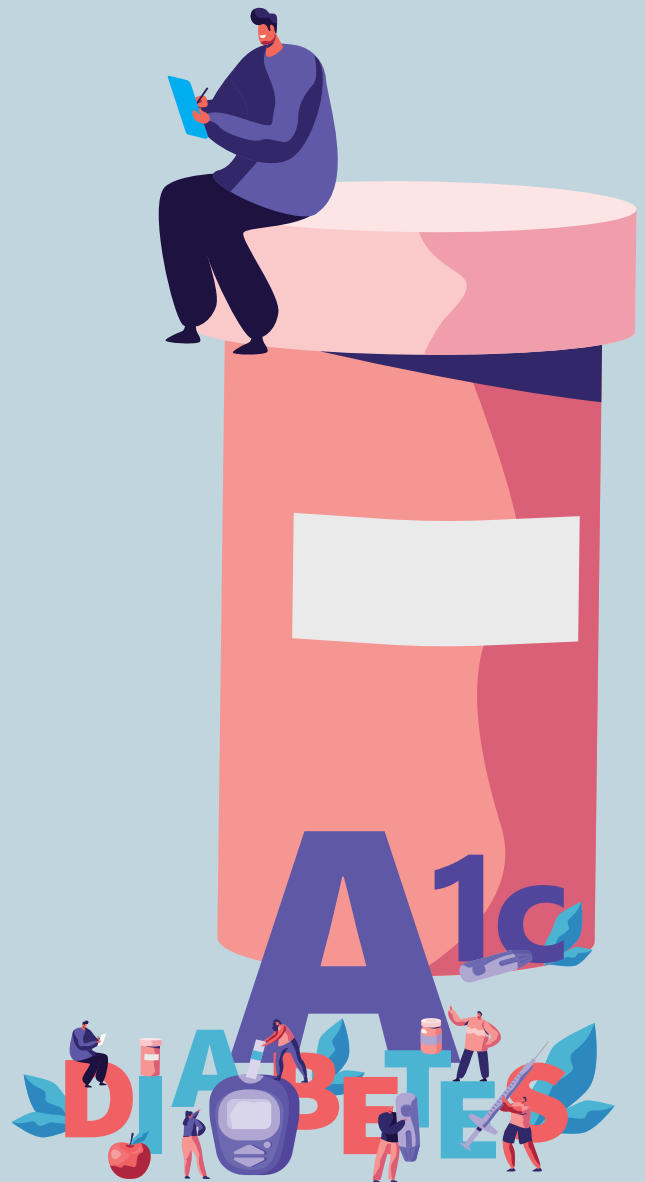
- Pharmacists are uniquely positioned to engage with members about diabetes wellness. This can include formal diabetes self-management programs, medication optimization, and one on one counseling.
- Pharmacists are the most accessible and trusted providers within a member's healthcare team.
- Sharing A1c values with pharmacists arms them with objective information about the member's diabetic health and allows them to more closely manage the disease state.

## What do we need from you?

- Eligibility data to define your member population.
- Pharmacy claims data to understand diabetes diagnosis
- Medical claims data – Used to understand member diagnoses and procedural codes.
- Supplemental lab claims feed to provide additional detail on A1c values to pharmacies.

## What are the next steps?

- Engage your network pharmacies around comprehensive care for members with diabetes.
- Launch your Comprehensive Diabetes Care Program with PQS in time to make an impact in 2021.
- Contact PQS today at [info@pharmacyquality.com](mailto:info@pharmacyquality.com)



### Pharmacies can:

- Test
- Document
- Educate
- Retest